

ClearFlux™ Dialyzer Regeneration System

Excellence in Technology



40% Savings Over Single Use

97.5% Waste Reduction

“...Recovers the total cell volume and the clearance of small and middle molecules of the dialyzers to levels that are approximately equivalent to those of new dialyzers.”

FDA Cleared 510(k) Labeling



1-855-NEW-FLUX

www.novaflux.com

info@novaflux.com

Features

Performance

- Fully Automated—No manual pre-cleaning required
- 40 Treatments per dialyzer (average)
- Maintains Total Cell Volume (TCV)
- Recovers middle molecules clearance
- 4 Dialyzers per Patient per Year

Cost Savings

- 40% savings vs. single use
- 50% labor reduction compared to conventional reuse
- 66% reduction in peracetic acid
- 70% reduction in RO water
- Ability to batch dialyzers

User Friendly

- Reliable performance
- Easy-to-use software for patient tracking
- Simple, clear and defined operations
- Streamlined processing operations
- 24/7 standby technical support

Green Technology

- Long-term sustainability at low cost
- 97.5% waste reduction vs. single use
- Environmentally-safe reprocessing chemistry

Specifications

Equipment Specifications

Dimensions	Height: 20 inches
	Depth: 32 inches
	Width: 14 inches
	Weight: 60 pounds
Electrical Requirements	Electrical Supply: 110V (50/60 Hz)
	Amperage: 15 Amps
System Computer Requirements	1 GHz processor speed
	256MB of memory
	20GB hard disk drive
	Monitor (Size may vary)
	4 USB ports
	1 RS232 serial port
	1 10MB/S Ethernet port
Water Requirements	Pressure: 30 psi
	Quality: AAMI RO Water
Air Requirements	Pressure: 40 psi
	Quality: HEPA Filter
Drain Requirements	Max. drainage: 4000 ml/min water
	Drain Capacity: 10 liters of water
Environmental Limits	Ambient Temp. Range: 15°C - 30°C
	Relative Humidity: 5% - 95%



1-855-NEW-FLUX

info@novaflux.com

www.novaflux.com

Features

Performance

- Fully Automated—No manual pre-cleaning required
- 40 Treatments per dialyzer (average)
- Maintains Total Cell Volume (TCV)
- Recovers middle molecules clearance
- 4 Dialyzers per Patient per Year

User Friendly

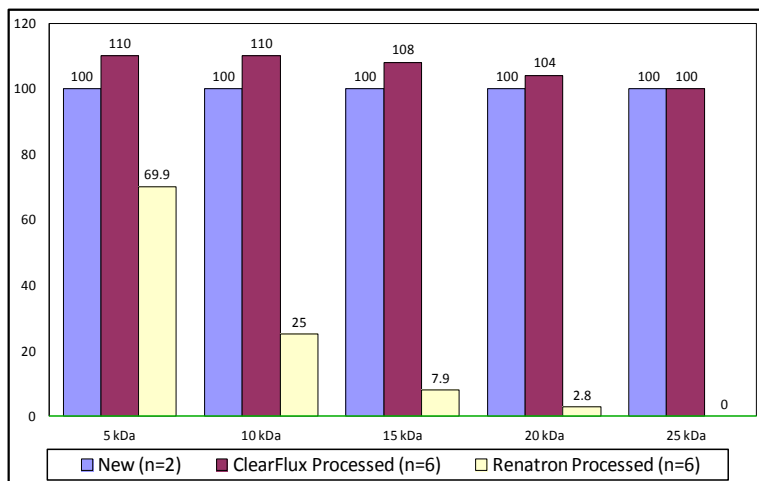
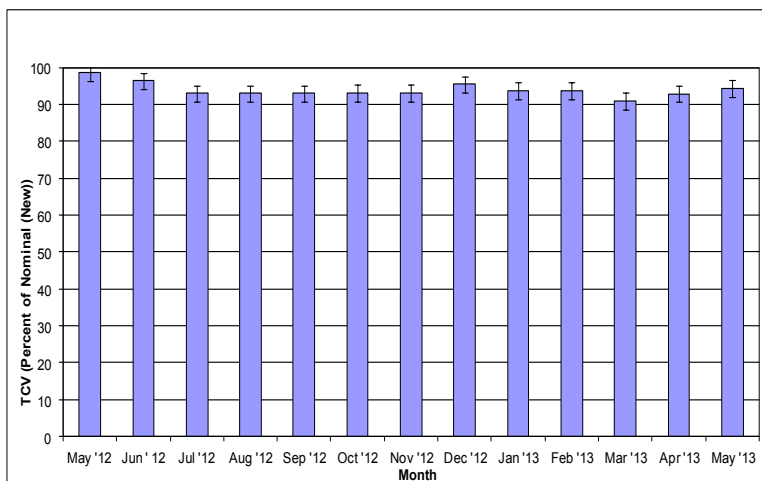
- Reliable performance
- Easy-to-use software for patient tracking
- Simple, clear and defined operations
- Streamlined processing operations
- 24/7 standby technical support

Cost Savings

- 40% savings vs. single use
- 50% labor reduction compared to conventional reuse
- 66% reduction in peracetic acid use
- 70% reduction in RO water costs
- Ability to batch dialyzers
- Saving of 152 dialyzers per year vs. single use

Green Technology

- Long-term sustainability at low cost
- 97.5% waste reduction vs. single use
- Environmentally-safe reprocessing chemistry



1-855-NEW-FLUX

info@novaflux.com

www.novaflux.com

ClearFlux™ Regeneration - Experience in Dialysis Clinics Over 18 Months

Kt/V > 1.55 - consistent with no decline with number of treatments

β_2 - Microglobulin clearance - approximately equivalent to single use (+/- 5%)

TCV remains within 95% to 100% - moving average

Regeneration number - 37 to 45 per dialyzer in multiple clinics

Disposal averages 4 - 5 dialyzers /patient /year

Reliable performance demonstrated in multiple clinics

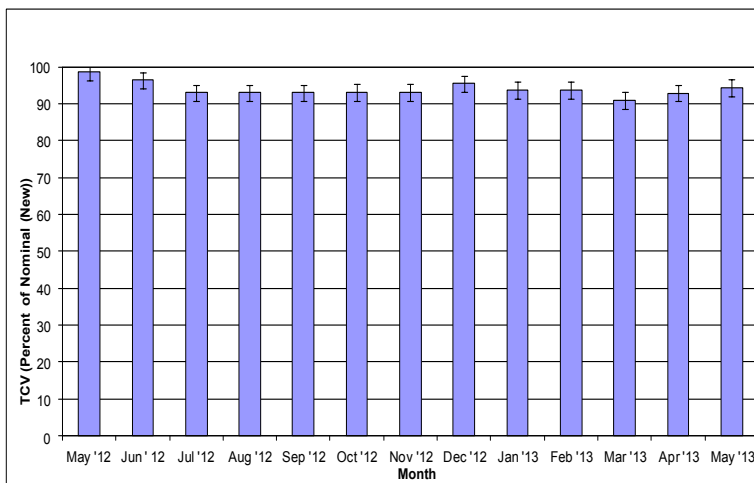
No patient adverse effects reported - 18 months in multiple clinics

Manual cleaning completely eliminated

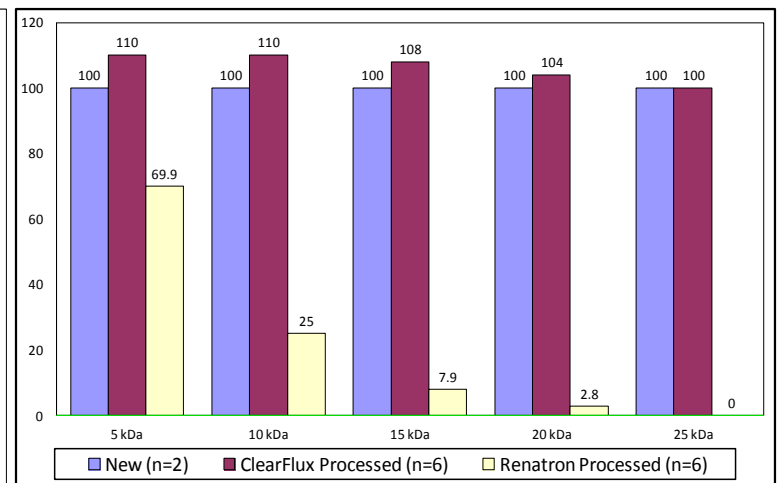
Streamlined operation and labor savings

Clearance Renewal - Small and Middle Molecules

Percent TCV for 70-Patient Clinic for 1 Year with ClearFlux™



Recovery of Middle Molecules Clearance



1-855-NEW-FLUX

info@novaflux.com

www.novaflux.com